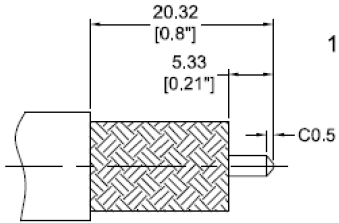


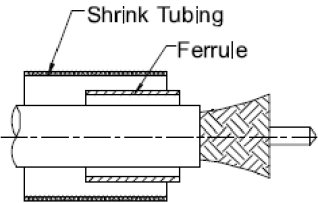
# Installation Instruction

REVISION					
ZONE	REV	DESCRIPTION	DATE	CHANGED BY	APPROVED
	A	INITIAL RELEASE	02/27/2025	KDANG	DWANG

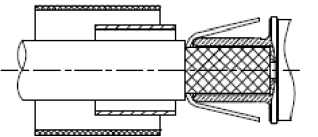


- A. Trim cable to dimensions shown using the CST-400-75 prep tool. Be careful to avoid nicking the braid  
B. Remove any residual plastic from center conductor  
C. Deburr center conductor using a fine file or Times DBT-U tools

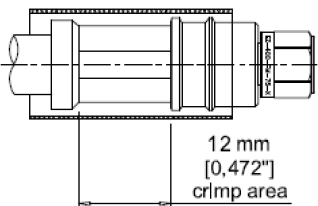
All dimensions in millimeters [INCHES]



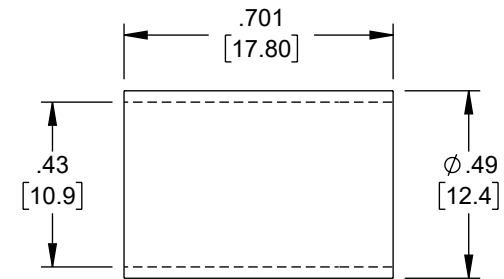
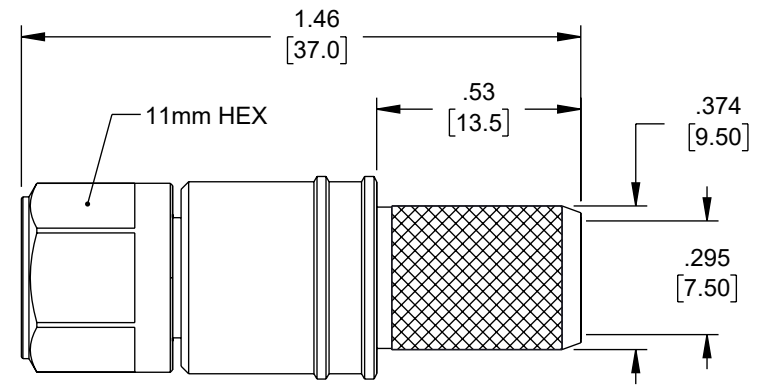
- A. Slide crimp ferrule and heat shrink tubing over the cable  
B. Flare the braid



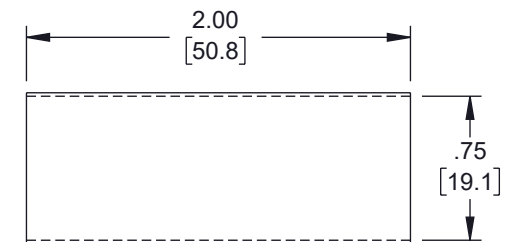
- A. Insert cable into connector body until dielectric is seated and center conductor is inserted fully into connector center pin.



- A. Slide crimp ferrule over braid and crimp as close to body as possible using .429" HEX crimp tooling. Pay attention to the crimp area, do not crimp rear of crimp sleeve  
B. Heat shrink tube over rear of connector body and down on to cable jacket using hot air gun



FERRULE

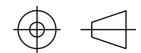


ADHESIVE ATUM SHRINK BOOT

UNLESS OTHERWISE SPECIFIED LEADING DIMENSIONS ARE INCHES DIMENSIONS IN [ ] ARE MILLIMETERS	
TOLERANCES:	
X = ±.2 [5]	FRACTIONS ± 1/32
XX = ±.02 [0.5]	ANGLES ± 1°
XXX = ±.005 [0.13]	
CABLE LENGTH TOLERANCES:	
≤12 [305]	≤1 [25] / -0
>12 [305] ≤60 [1524]	≤2 [51] / -0
>60 [1524] ≤120 [3048]	≤4 [102] / -0
>120 [3048] ≤300 [7620]	≤6 [152] / -0
>300 [7620]	≤5% / -0
ALL DIMENSIONS ARE FOR REFERENCE ONLY AND SUBJECT TO CHANGE WITHOUT NOTICE UN-DIMENSIONED/NON-CRITICAL FEATURES MAY VARY IN SIZE AND LOCATION COLORS MAY VARY	



Website: [www.FairviewMicrowave.com](http://www.FairviewMicrowave.com)  
Phone: 1.800.715.4396 | 1.972.649.6678



INTERPRET ALL DIMENSIONS AND  
TOLERANCES PER ASME Y14.5

SCALE NONE SHEET 1 OF 1

DESCRIPTION  
75 Ohm F MALE CONNECTOR CRIMP/NON-SOLDER CONTACT  
ATTACHMENT FOR LMR-400-75

SIZE	CAGE CODE	DRAWN BY	ITEM NO.	REV
A	3FKR5	KDANG	EZ-400-FM-75-X	A

THE INFORMATION CONTAINED IN THIS DRAWING IS THE SOLE PROPERTY OF INFINITE ELECTRONICS, INC. ANY REPRODUCTION IN PART OR WHOLE WITHOUT THE WRITTEN PERMISSION OF INFINITE ELECTRONICS, INC. IS PROHIBITED. THESE COMMODITIES, TECHNOLOGY OR SOFTWARE WERE EXPORTED FROM THE UNITED STATES IN ACCORDANCE WITH THE EXPORT ADMINISTRATION REGULATIONS. DIVERSION CONTRARY TO U.S. LAW PROHIBITED.