

SPECIFICATIONS

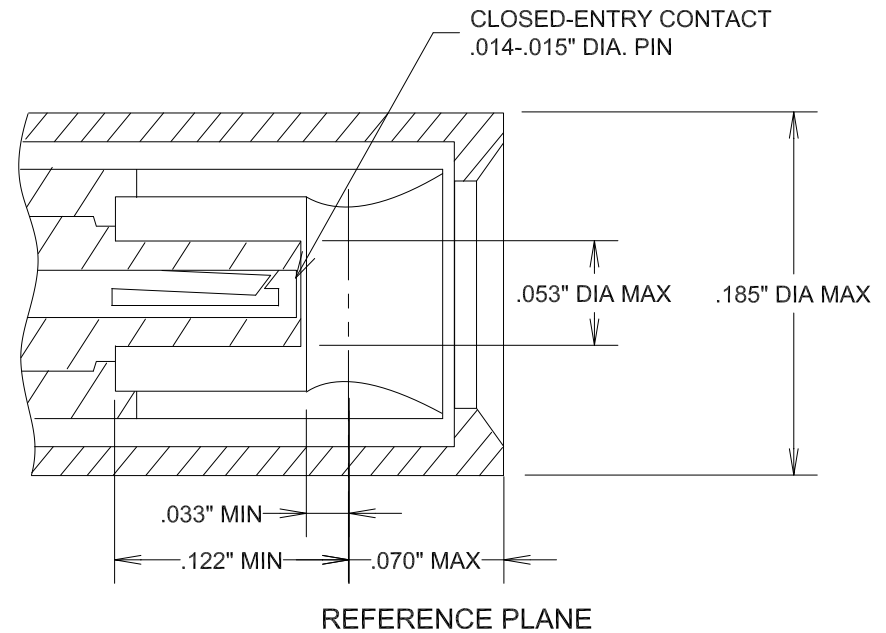
ELECTRICAL

FREQUENCY: DC-12 GHZ
 IMPEDANCE: 50 OHMS
 VRMS: 250 VOLTS SEA LEVEL

MECHANICAL

MATERIALS BODY: BRASS
 PLUG SPRING FINGERS, CENTER CONTACT: BeCu
 CONTACT PLATING: GOLD
 INSULATOR: TEFLON
 FORCE TO ENGAGE: 6 LBS MAX
 FORCE TO DISENGAGE: 2 LBS MIN
 DURABILITY: 500 MATING CYCLES
 ROHS COMPLIANT

SSMB PLUG



				FAIRVIEW MICROWAVE INC.	
				ALLEN, TX 75013 WWW.FAIRVIEWMICROWAVE.COM	
				TITLE	
				SSMB PLUG	
SIZE	CAGE CODE	DWG NO	REV		
A	3FKR5		SSMB PLUG		
SCALE					SHEET