

# WRD180C24 TO 2.92/F 18-40 GHZ WAVEGUIDE DOUBLE RIDGE TO COAXIAL ADAPTER

SMW1840DRK

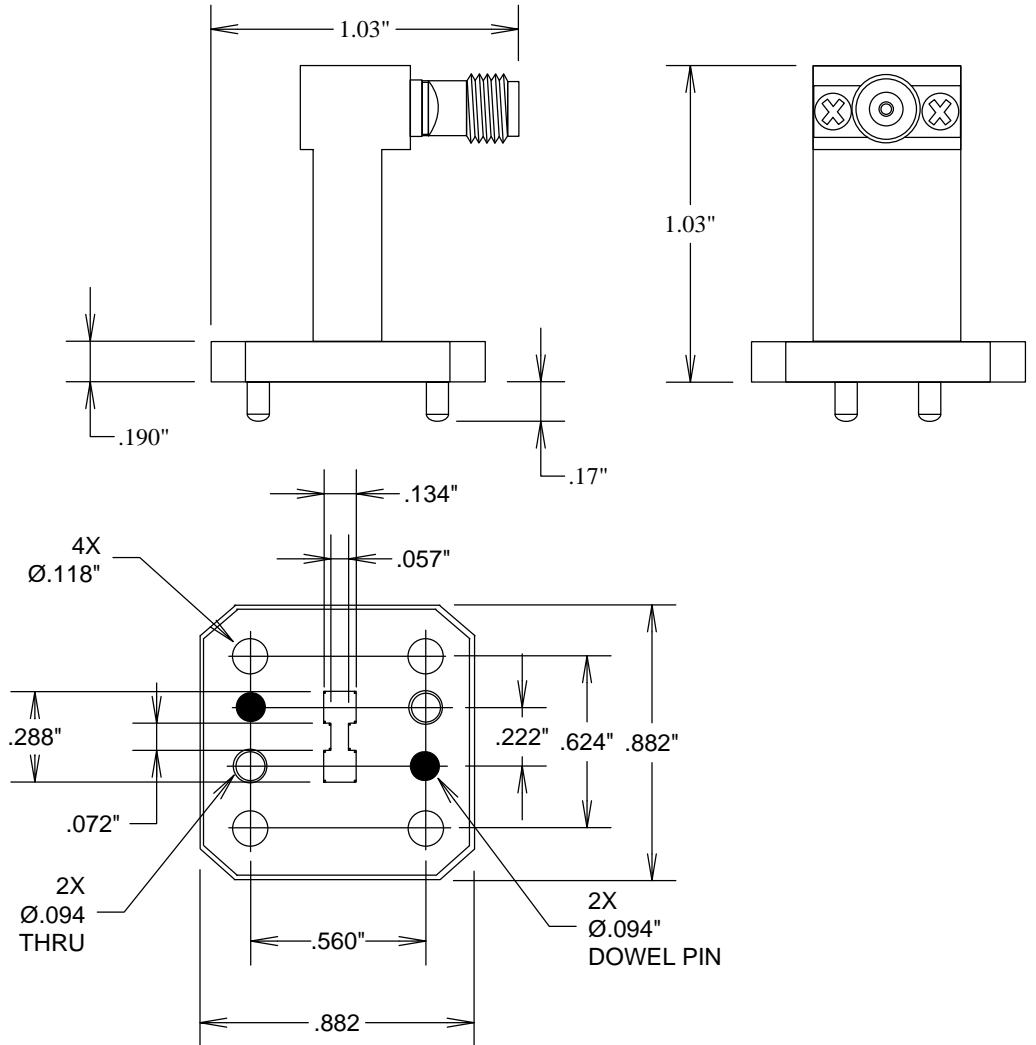
## SPECIFICATIONS

### ELECTRICAL:

FREQUENCY: 18-40 GHZ  
VSWR: 1.5:1 @ 18 GHZ 1.8 @ 40 GHZ

### MATERIALS:

BODY: Cu  
CONNECTORS: PASSIVATED STAINLESS STEEL



**FAIRVIEW MICROWAVE INC.**  
ALLEN, TX 75013 WWW.FAIRVIEWMICROWAVE.COM

TITLE  
**WRD180C24 TO 2.92/F 18-40 GHZ  
WAVEGUIDE DOUBLE RIDGE TO  
COAXIAL ADAPTER**

SIZE	CAGE CODE	DWG NO	REV
<b>A</b>	<b>3FKR5</b>	<b>SMW1840DRK</b>	--
SCALE	SHEET		