

SPECIFICATIONS

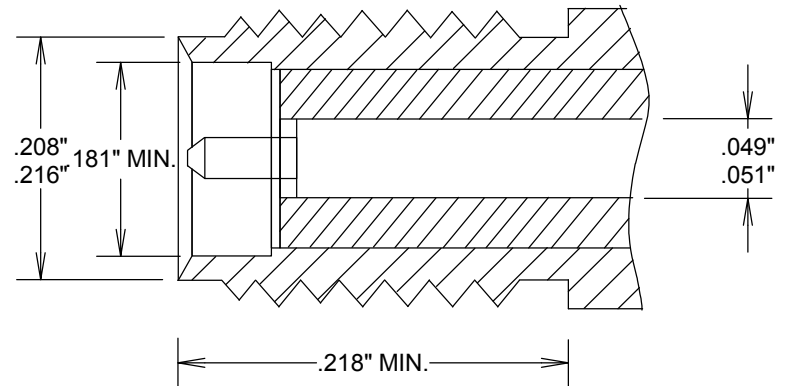
ELECTRICAL

FREQUENCY: DC-18 GHZ
 IMPEDANCE: 50 OHMS
 VRMS: 500 VOLTS

MECHANICAL

MATERIALS BODY: BRASS, PLATED GOLD,
 STAINLESS STEEL OR PASSIVATED
 MALE CONTACTS: BRASS OR BeCu
 FEMALE CONTACTS: BeCu
 GASKETS: SILICONE RUBBER
 INSULATOR: TEFLON

SMA-F
 REVERSE POLARITY



FAIRVIEW MICROWAVE INC.
 ALLEN, TX 75013 WWW.FAIRVIEWMICROWAVE.COM

TITLE

SMA-F REVERSE POLARITY

SIZE	CAGE CODE	DWG NO	REV
A	3FKR5	SMA-F RP	
SCALE	SHEET		