

# SMA F/F BULKHEAD ISOLATED GROUND 18GHZ

SM4936

## SPECIFICATIONS

### ELECTRICAL

50 OHMS  
 VSWR 1.20:1 MAX @ 18 GHZ  
 FREQUENCY: 0-18 GHZ

### MECHANICAL

500 CYCLES MIN  
 7-10 LBS COUPLING NUT MATING TORQUE

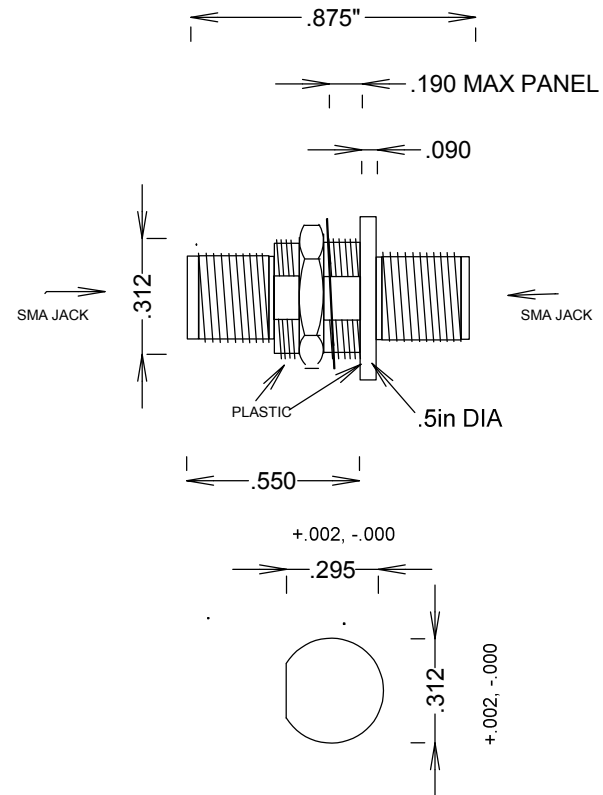
### ENVIRONMENTAL

-55 DEG C TO +100 DEG C  
 CORROSION: MIL-STD 202  
 VIBRATION: MIL-STD 202

### MATERIALS PASSIVATED STAINLESS STEEL

BODY: SST ASTM A484 / A582; & PLASTIC  
 BeCu ATSM-B-196  
 CENTER CONTACTS Au PLATED MIL-G-45204

ROHS COMPLIANT



RECOMMENDED PANEL CUTOUT

**FAIRVIEW MICROWAVE INC.**

ALLEN, TX 75013 WWW.FAIRVIEWMICROWAVE.COM

TITLE

**SMA F/F BULKHEAD  
 ISOLATED GROUND 18GHZ**

|          |              |               |          |
|----------|--------------|---------------|----------|
| SIZE     | CAGE CODE    | DWG NO        | REV      |
| <b>A</b> | <b>3FKR5</b> | <b>SM4936</b> | <b>A</b> |

|       |       |
|-------|-------|
| SCALE | SHEET |
|-------|-------|