

SMA/M TO MCX JACK ADAPTER

SM4796

SPECIFICATIONS

ELECTRICAL

50 OHMS

VSWR 1.25:1 MAX

FREQUENCY: DC-6 GHZ

MECHANICAL

100 CYCLES MIN

ENVIRONMENTAL

-55 DEG C TO +155 DEG C

INTERFACE: MIL-STD-348A

CECC 22220

MATERIALS

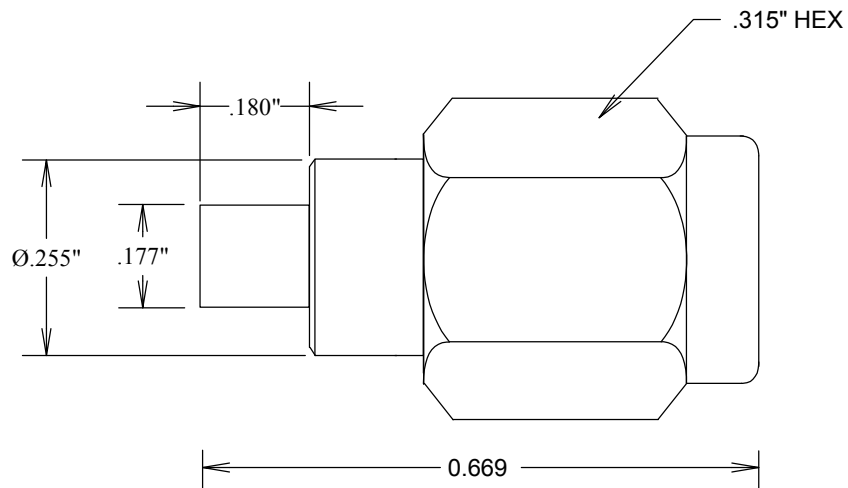
BODY: Au PLATED BRASS

CENTER CONTACT: BeCu

CONTACT PLATING: Au PER MIL-G-45204

INSULATION: TEFLON

ROHS COMPLIANT



FAIRVIEW MICROWAVE INC.

ALLEN, TX 75013 WWW.FAIRVIEWMICROWAVE.COM

TITLE

SMA/M TO MCX JACK ADAPTER

SIZE	CAGE CODE	DWG NO	REV
A	3FKR5	SM4796	--

SCALE

SHEET