

# SMA-M FLANGE SLOTTED CONTACT

SC7655

## SPECIFICATIONS

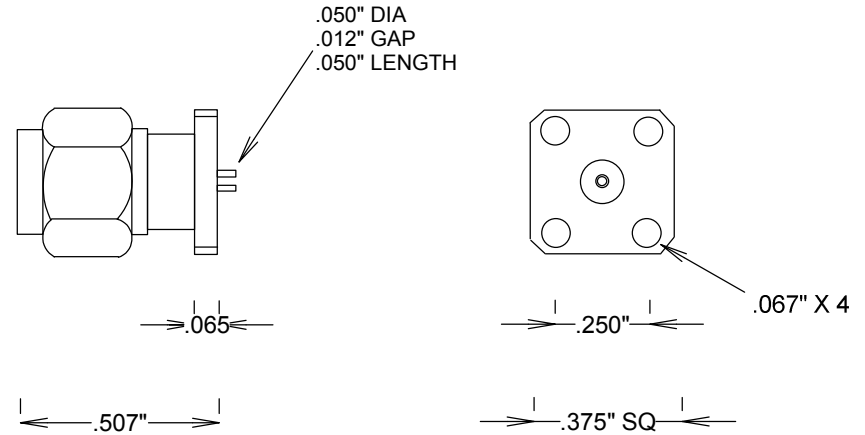
### ELECTRICAL:

FREQUENCY: 0-18 GHZ  
 IMPEDANCE: 50 OHMS  
 OP. TEMP RANGE: -55C to +155°C

### MECHANICAL:

MATERIAL BODY: Au PLATED STAINLESS STEEL  
 CENTER CONTACT: BeCu  
 CONTACT PLATING: Au MIL-G-45204  
 INSULATOR: TEFLON  
 INTERFACE: MIL-STD-883A  
 NON-CAPTIVATED CONTACT  
 ROHS COMPLIANT

SMA-M



NON-CAPTIVATED CONTACT

				<b>FAIRVIEW MICROWAVE INC.</b>			
				ALLEN, TX 75013 WWW.FAIRVIEWMICROWAVE.COM			
				TITLE			
				<b>SMA-M FLANGE SLOTTED CONTACT</b>			
SIZE		CAGE CODE		DWG NO		REV	
<b>A</b>		<b>3FKR5</b>		<b>SC7655</b>		--	
SCALE						SHEET	