

SMP LIMITED DETENTE SHROUD PRESS IN

SC5257

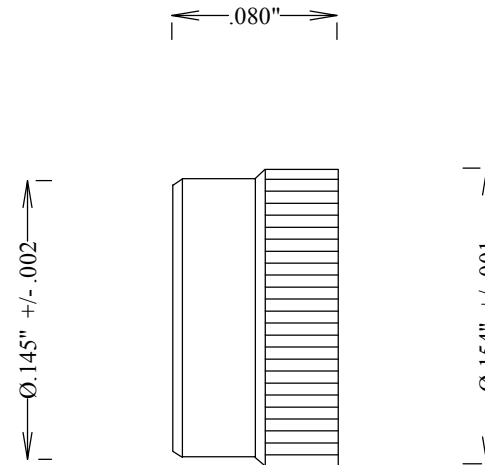
SPECIFICATIONS

ELECTRICAL:

FREQUENCY: 0-40 GHZ
IMPEDANCE: 50 OHMS

MECHANICAL:

MATERIAL BODY: PASS S STEEL
INTERFACE: SMP DESC 94007
OP. TEMP RANGE: -55° to +155°C
ROHS COMPLIANT
LIMITED DETENTE
FORCE TO ENGAGE: 10.0 LBS MAX
FORCE TO DISENGAGE: 2.0 LBS MIN



FAIRVIEW MICROWAVE INC.

ALLEN, TX 75013 WWW.FAIRVIEWMICROWAVE.COM

TITLE

**SMP LIMITED DETENTE SHROUD
PRESS IN**

SIZE	CAGE CODE	DWG NO	REV
A	3FKR5	SC5257	A

SCALE

SHEET