

SMP SMOOTH BORE SHROUD PRESS IN

SC5255

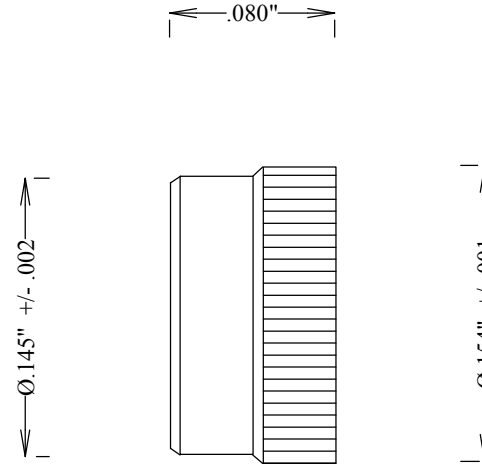
SPECIFICATIONS

ELECTRICAL:

FREQUENCY: 0-40 GHZ
IMPEDANCE: 50 OHMS

MECHANICAL:

MATERIAL BODY: PASS S STEEL
INTERFACE: SMP DESC 94007
OP. TEMP RANGE: -55° to +155°C
ROHS COMPLIANT
SMOOTH BORE
FORCE TO ENGAGE: 2.0 LBS MAX
FORCE TO DISENGAGE: 0.5 LBS MIN



FAIRVIEW MICROWAVE INC.

ALLEN, TX 75013 WWW.FAIRVIEWMICROWAVE.COM

TITLE

SMP SMOOTH BORE SHROUD PRESS IN

SIZE	CAGE CODE	DWG NO	REV
A	3FKR5	SC5255	--

SCALE

SHEET