

SMA-M CONN .141SR DIRECT SOLDER

SC3012, SC3014

SPECIFICATIONS

ELECTRICAL:

FREQUENCY: 0-18 GHZ
 VSWR 1.3:1 MAX
 IMPEDANCE: 50 OHMS
 OP. TEMP RANGE: -55C- +155C

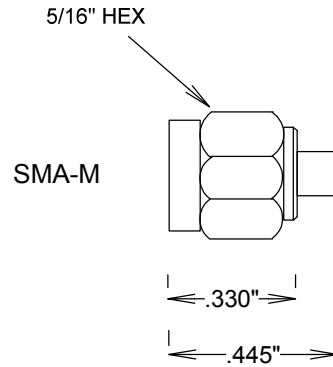
MECHANICAL:

MATERIAL BODY: Au PLATED STAINLESS STEEL
 CENTER CONTACT: BRASS
 CONTACT PLATING: Au PER MIL-G-452304
 INSULATOR: TEFLON
 INTERFACE: MIL-STD-883
 ROHS COMPLIANT

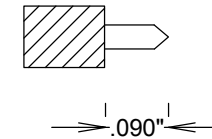
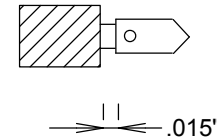
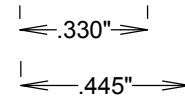
SC3014: PASSIVATED COUPLING NUT

ASSEMBLY

TRIM CABLE AS SHOWN,
 SOLDER PIN TO CENTER CONDUCTOR,
 LEAVING .015" GAP BETWEEN TEFLON & CONTACT
 INSERT CABLE INTO SMA BODY,
 SOLDER CABLE JACKET WHILE KEEPING END OF
 CABLE FLUSH WITH TEFLON & CHECKING FINAL
 PIN DEPTH



PIN



RECOMMENDED STRIPPING

FAIRVIEW MICROWAVE INC.

ALLEN, TX 75013 WWW.FAIRVIEWMICROWAVE.COM

TITLE

SMA-M CONN .141SR DIRECT SOLDER

SIZE	CAGE CODE	DWG NO	REV
A	3FKR5	SC3012, SC3014	B
SCALE	SHEET		