

ATTENUATORS 2.4mm M/F 50GHZ

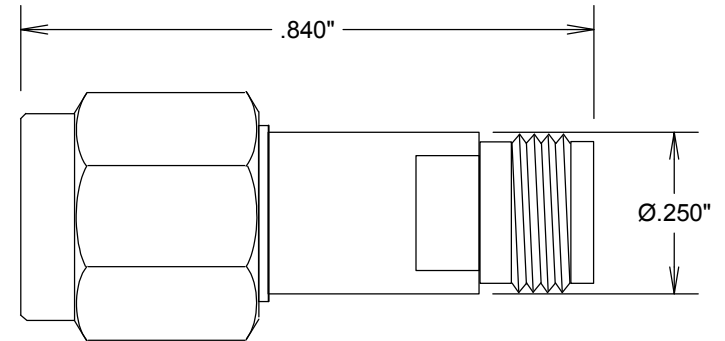
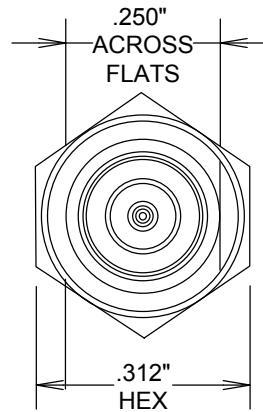
SA50-XX

SPECIFICATIONS

ELECTRICAL:

FREQUENCY: 0-50 GHZ
 VSWR @ DC-26.5 GHZ: 1.35:1 MAX
 VSWR @ 26.5-40 GHZ: 1.50:1 MAX
 VSWR @ 40-50 GHZ: 1.65:1 MAX
 POWER (AVG) 0.5 WATTS @ 25 DEG C
 DERATES TO 0.25 W @ 135 DEG C
 POWER (PEAK) 100 WATTS
 IMPEDANCE: 50 OHMS

DB VALUE	ATTENUATION ACCURACY		
	DC-26.5 GHZ	26.5-40 GHZ	40-50 GHZ
3,6,10	± .5 DB	± 1.0 DB	±1.5 DB
20	± .75 DB	± 1.25 DB	± 2.0 DB



2.4/MALE

2.4/FEMALE

MECHANICAL:

MATERIAL BODY: PASSIVATED STAINLESS STEEL
 MATERIAL RING & CONTACTS: BeCu
 CENTER CONTACT: GOLD PLATED PER MIL-G-45204
 RESISTIVE ELEMENT: AlNi SUBSTRATE T Ni RESISTOR
 RECOMMENDED NUT TORQUE: 8-10 IN-LBS

ENVIRONMENTAL:

TEMP: -55 C TO +135 C

ROHS COMPLIANT

FAIRVIEW MICROWAVE

ALLEN, TX 75013 WWW.FAIRVIEWMICROWAVE.COM

TITLE

ATTENUATORS 2.4mm M/F 50GHZ

SIZE	CAGE CODE	DWG NO	REV
A	3FKR5	SA50-XX	D
SCALE		SHEET	